

LCD Access Controller with Finger Vein

Networking / Stand-alone

Finger Vein
Highest
Security
Unique

AR-821EV / EVi



Take actual objects as products standards and pictures are just for reference

Features

- Highest security biometric Access, finger is the unique key
- RS-485 or TCP/IP communication interface
- Built-in Watchdog to prevent system from hanging
- User capacity(for card):10,000 / Event log:11,000
- Vein-User capacity up to 1,000 (2 fingers for each user)
- High fingerprint recognition rate, FAR<0.0001%,FRR<0.01%
- Operating Illuminance up to 20,000 Lux
- Authentication Speed:1.1 Seconds (typical) (with 1000 persons registered)
- Access mode:
Vein Only , Card+Vein,
Card or PIN+Vein , Card + PIN+Vein
- Supporting WG port for anti-pass-back function
- TTL serial output for various application and lift control
- Menu setting with LCD panel(128 X 64)
- 2 sets of Auto-Open Zones editable by stand-alone operation
- 63 sets of time zones for accessing
- Coordinating with softwares for further application on access control, time attendance, payroll, and door/sensor image-monitor function
- Flexible to integrate with other equipments
- Built-in Multi-Output:
Door Lock/Alarm/Arming/Duress

SOYAL[®]

ACCESS CONTROL SYSTEM RFID solutions · Proximity & Smart cards · Hardware & Software OEM/ODM Service

RoHS Compliant SOR FC CE MA

LCD Access Controller with Finger Vein AR-821EV / EVi

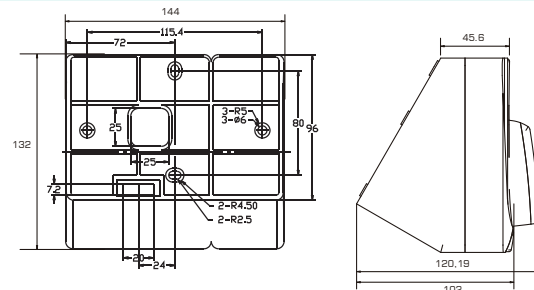


Specification

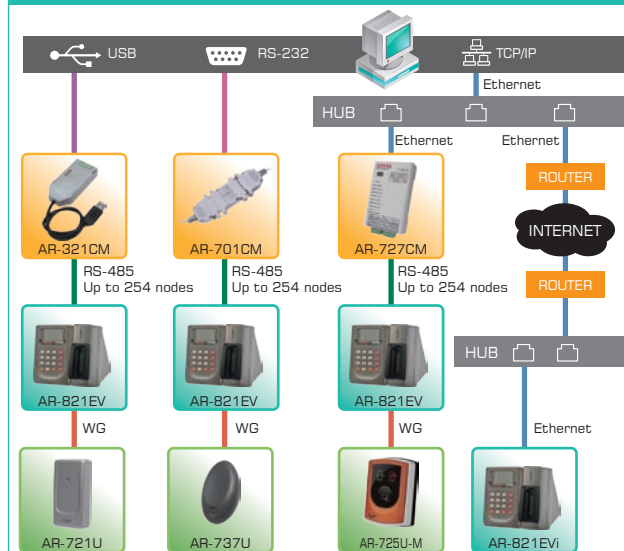
Frequency	125kHz	13.56MHz
Data Standard	EM Standard	<ul style="list-style-type: none"> ISO14443A/B ISO15693 DESFire PSAM
Active Distance (Depending on tag or card)	8-15cm	2-8cm
Power Supply	10-24VDC	
Power Consumption	<5W	
Communication Interface	RS-485 (AR-821EV) / Ethernet (AR-821EVi)	
Baud Rate	RS-485	9600 bps(N,8,1)
	Ethernet	10/100M Base T
Operating Temperature	-20 °C to +50 °C	
Digital Input	1 Egress(R.T.E.) / 1 Door contact	
Relay Output	1 Alarm Relay / 1 Lock Relay	
Lock Relay Time	Toggle, 0.1-600 Sec..	
Alarm Time	Toggle, 1-600 Sec.	
Tamper Switch	No	
User Capacity	10,000	
Event Log	11,000	
External Reader	WG26/34,ABA-II	
Anti-pass-back	Yes	
Lift Control	64floors, 15,000 Users	
Serial Port	TTL(4800bps,N,8,1)	
Real Time Clock	Yes	
LCD Panel	128*64 (4 lines message,16 characters/line)	
Door Bell Button	No	
Transistor Output	No	
Protection standard	No	
Indicator	6 LED+1 Beeper	
Keypad Material	Rubber	
Housing Material	ABS	
Time Zone	63	
Operating Mode	Stand-alone/Networking	
Color	Gray	
FAR	<0.0001%	
FRR	<0.01%	
Vein-User capacity	1,000 User (2 fingers per person)	
Auth. Speed(1:N)	1.1Sec.	
Operating Illuminance	20,000 Lux	
Dimension(mm)	132(L)X144(W)X102(H)	
Weight(g)	455±10	

Dimension(mm)

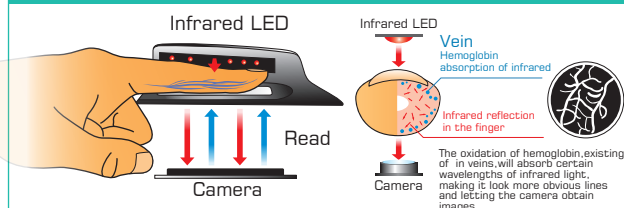
AR-821EV/EVi



Structure



The principles of finger vein authentication



Application



Biological Identification

Certificated Technique	Characteristics	Installation Change	Acceptation	Data security	Feature Confidentiality	Operational Convenience	Precision(%)		Applied System
							FRR	FAR	
Vein	Partial images from vein lines	Middle	Easy	High	High	High	0.01	0.0001	ALL
Fingerprint	Fringerprint marks	Low	Uneasy (psychologically)	Middle	Low	High	0.5	0.001	ALL
Iris	The Radial lines of iris of eyes	High	Uneasy (psychologically)	High	Middle	Middle	2.8	0	ALL
Types of palms	The size, length, thickness, or ratio of the palm	Middle	Easy	Low	Lo+	Middle	0.15	0.15	Access Control
Types of faces	The outlines of faces. The shape and disposition of eyes and noses	Middle	Easy	Low	Low	High	1	1	ALL

Authorized dealer