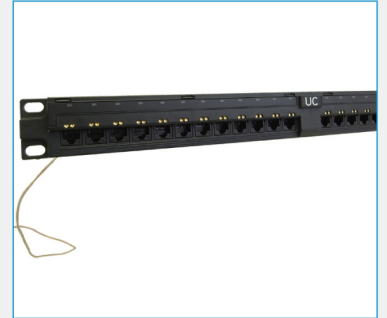


# UC C500 LI U BK 24 1U

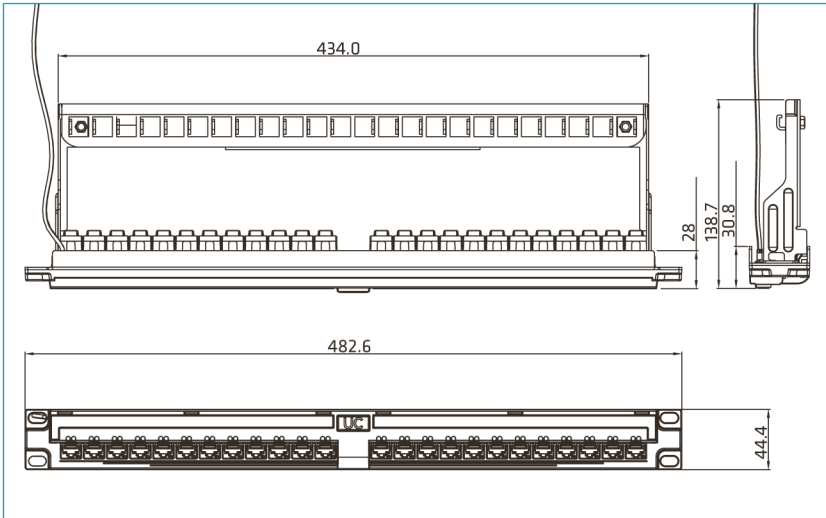
19" 1U 24P Smart FTP Patch Panel, with module, Cat 6A

## Specification

Item	Description
<b>Panel</b>	SPCC, T=1.8mm, Ni plated
<b>Front Cover</b>	ABS+PC, UL94V0
<b>Rear Cable Management</b>	SPCC, black coated



- FTP Smart Patch panel with 24 pieces ToolFast Cat.6A Shielded Keystone Jack (MJTR214).
- LED on each port for port activity indication.
- RJ45 port on panel back for communication to IMU.
- Supplied with rear cable management to ensure proper cable bending radius.
- Foldable rear cable management ideal for minimizing packaging size.



## Ordering Information

SAP IC	UC P/N	UC Material Code	Product Description	P.U
YLBP01006	LI9771	UC C500 LI U BK 24 1U	19" 1U 24P Smart FTP Patch Panel, with module, Cat 6a	1pc/box